



Future Proof with SupaWall – The Low Carbon Solution

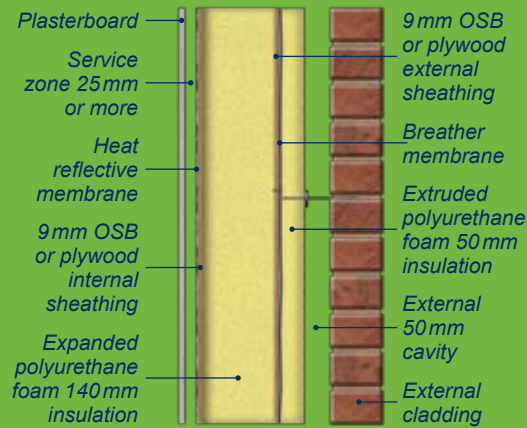
SupaWall® SupaFloor® SupaRoof®

 SupaWall® by Maple Timber Frame

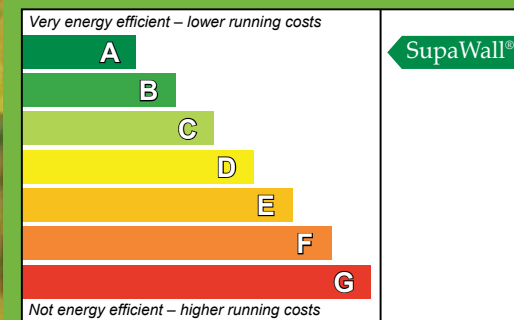
SupaWall Advanced Closed Panel System

SupaWall Eliminates the Need for Central Heating

- Factory controlled insulation injection for optimum foam consistency
- Very low U-values (0.11 W/m²K) economically achieved
- Green Guide A/A+ sustainability and environmental credentials
- Sustainably sourced FSC/PEFC chain of custody timber
- Covered by Patents: GB2415714 and GB2436989.



- 'A' rated Energy Performance Certificate
- Quality control checks at all stages of production
- BBA accredited manufacturer
- Very low air permeability
- Can reduce heating bills by over 80%
- PassivHaus listed
- Negligible thermal bridging
- One solution for all Codes for Sustainable Homes Levels 4, 5 & 6
- Suitable for all types of architecture
- Simplified assembly reduces reliance on construction skills.





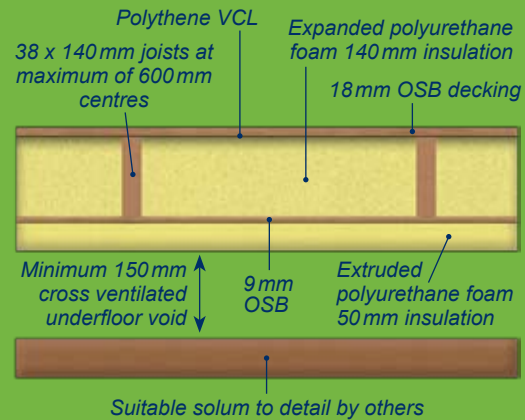
Excellent Construction Principles
with SupaWall

SupaFloor



- A high quality solution at very competitive cost
- A robust, cassette-based timber structure
- Double insulated for excellent thermal performance
- Meets existing and forthcoming Regulations, Codes and Standards
- Factory injected environmentally friendly insulation
- Available with level access and other typical design requirements
- A 21st century version of the traditional proven suspended timber ground floor.

Joists supported on load bearing walls and honeycomb sleeper walls as required



SupaRoof



- Excellent thermal efficiency/PassivHaus solution
- Off site quality manufactured roof panels
- Provides instant room space
- Safe and efficient to install
- Installed in the traditional ridge to eaves orientation
- Patented and innovative panel system simply slots together
- Requires a small installation team with no on-site carpentry skills
- Can be weather resistant within one day
- A complete, eco friendly structural timber insulated panel system.



A Completely Integrated Low Carbon Build System



Maple

Maple Timber Frame of Langley
Tarnacre Hall Business Park
Tarnacre Lane
St Michaels
Preston PR3 0SZ

Telephone: +44 (0)1995 679444
Facsimile: +44 (0)1995 679769
Web: www.mapletimberframe.com